



Value beyond the ordinary

Company Profile

Capstone is a civil & structural engineering firm with over a decade of experience in providing services ranging from structural design, structural audit, non-destructive testing, turnkey project consulting and project management.

Our project experience includes high rise buildings, manufacturing plants, electric substations, cold storages, road & rail bridges, solar & wind power plants, nuclear power projects, telecom infrastructure and marine structures.

Our diverse capabilities and economical service offering has made us a preferred service provider for real estate developers, construction companies, architectural firms, industrial houses and Government organizations.

Our team consists of more than thirty highly professional people looking to add value to our clients. We seek to build strong, long-term relationships with our clients by understanding their needs.

Services Offered

- Turnkey Project Consulting
- Civil & Structural Engineering
- Structural Assessment & Retrofitting Design
- Peer Review & Value Engineering
- Fabrication Drawings & Rebar Detailing Drawings
- Project Management
- Scaffolding Training
- Non-Destructive Testing Services

Project Snapshots



**Cyclone Replacement
IOCL, Vadodara**



**Royal Terrace Apartments,
Geurnsey, Channel Islands**

Key Team

Rahul Agarwal

B.Tech. (IIT Bombay), M.Tech. (IIT Bombay)
BMC Registration No. : STR/A/49

Rahul has an experience of designing a wide variety of structures including residential & commercial buildings, industrial plants, temporary structures and telecom towers. Some of his recent work includes design of nuclear power plant structures, wind & solar power plants and cargo complex for Mumbai Airport.

Apart from Indian building codes, Rahul has a comprehensive knowledge of US & Euro design codes enabling him to apply valuable international design practices to projects in India.

Rahul's other interests include design of temporary scaffolding structures. He has successfully conducted training sessions for engineers of Reliance Industries to help them design and use scaffolding. He has also designed scaffolding for Mumbai Metro project.

Rajdev Singh

B.E. Civil (Mumbai University)

Rajdev has over 23 years of experience in detailing of structures and heads the detailing department at Capstone. He has spent a long time of his career at Petron Emirates, Dubai with his work encompassing detailing of hoppers, silos, equipment support structures, pipe racks, conveyors, furnaces and ducts. Rajdev has also worked as a fabrication shop supervisor, giving him the right mix of on-site and off-site experience, an essential for good detailing.

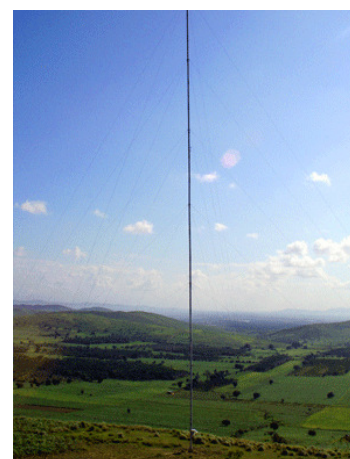
Project Snapshots



Wind Turbine Towers



**Iron Ore Pellet Plant
Godawri Power & Ispat Ltd.**



Guyed Wind Masts

Services for Solar Industry

- Design of Module Mounting Structures
 - ☐ Ground Mounted
 - ☐ Rooftop
 - ☐ Seasonal Tilt
 - ☐ Solar Tracking Systems
- Design of Foundations for Mounting Structures
 - ☐ Pile foundations
 - ☐ Isolated footings
 - ☐ Ballast type foundations
- Preparation of fabrication drawings & BOM
- Design of Ancillary Structures for Solar Plants
 - ☐ Control Rooms
 - ☐ Watch Towers
 - ☐ Water Tanks
 - ☐ PV Rooms
- Peer Review & Cost Optimization of Mounting structures
- Contractor Bid Evaluation & Preparation of Comparatives
- Site Inspection Services
 - ☐ Check conformance with drawings
 - ☐ Check proper erection
 - ☐ Check pile integrity
- Fabrication Shop Inspection services
 - ☐ Check prototype structure
 - ☐ Check all materials
 - ☐ Check welding procedure
 - ☐ Suggest any required material tests

Selected Solar Industry Projects

- Solar Power Plant at Neemuch, M.P.
- Solar Power Plant at Rajgarh, M.P.
- Solar Power Plant at Trichy, Tamil Nadu
- Solar Power Plant at Erode, Tamil Nadu
- Solar Power Plant, 5 MW at Hyderabad, A.P.
- Solar Power Plant on Almatti Canal, Karnataka
- Solar Car parking structures at Mahindra factory, Nashik
- Mounting structures for use at Telecom Tower sites
- Transportable Solar Structures for project in Middle East
- Single Axis Tracker Structure for Power Plant in Tamil Nadu
- Rooftop seasonal tilt solar structure – ballast type & adhesive fixing type
- Rooftop fixed tilt solar structures on Canteen Building at Chennai
- Rooftop solar structure at Kodiakanal
- Peer review & optimization for mounting structure at Hindupur, A.P.
- Peer review and technical bid evaluation for Solar plant at Jodhpur
- Peer review of solar structure for plant at Ahmednagar, Maharashtra
- Design of ancillary civil structures for Solar plant at Jodhpur
- Design of ancillary civil structures for Solar plant at Patdi, Gujarat
- Design of civil structures for 5MW Solar plant at Trichy, Tamil Nadu

Clients



Other Important Projects

- Cargo Complex at Santacruz Domestic Airport, Mumbai
- MTNL Telephone Exchange building, Vashi
- Electrical Substation Building, Palm Jebel Ali, Dubai
- Design of Site Assembly Shop for Nuclear Power project at Kalpakkam
- Design of Power Equipment Manufacturing Plant, NBPPL, Chittoor
- Design of Structures for cyclone replacement at IOCL, Vadodara
- Design of Retrofits for LPG plant, ONGC, Uran
- Fabrication plant for BHEL, Varanasi
- Engineering for 1.2MTPA Pellet plant for Godawari Power & Ispat Ltd.
- Showroom & Workshops for Tata Motors at Muzaffarpur
- Hotel Frett Marina Building, British Virgin Islands
- Analysis of Concrete Silos, Alcan Iceland Ltd., Iceland
- 38 storied residential towers at Kanjurmarg (Lodha Grande)
- 20 storied residential cum office complex Mumbai for Lotus Group
- 30 storied residential building (Lodha Simtools), Thane
- Seismic Assessment of Residential Buildings for Cipla Ltd. at Sikkim
- Seismic Assessment of office building, Goldman Sachs, Mumbai
- Structural Assessment of DMS Plant & Core Shed for Rio Tinto
- Structural Assessment & Capacity Expansion for John Deere at Pune
- Structural assessment of Rolls Royce facility for blast vibrations
- Design of Telecom towers (4G deployment) for Reliance Industries
- Design of Guyed Wind Masts and Latticed Towers, Shah Energy Inc
- Design of Wind Turbine Towers for ABS Group, Mumbai



TATA CONSULTING ENGINEERS LIMITED



HALLIBURTON



Rolls-Royce

RioTinto

